

SNOMED CT Changes and New Vision Local Codes – Release v31.1.0

This is the release guide for the v31.1.0 SNOMED CT dictionary and Vision Local Code release.

As you may be aware, **Vision 3** dual codes all data, data is entered using Read codes and mapped to SNOMED CT behind the scenes. From the introduction of SNOMED CT there have been additions that cannot be directly mapped to existing Read codes.

 **Note** - These can be recorded in **Vision Anywhere**, which is fully SNOMED CT compliant.

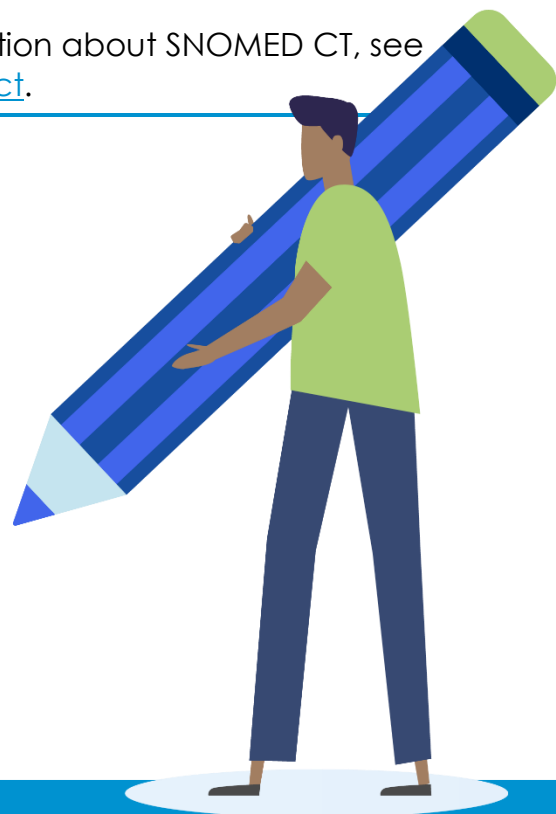
Cegedim Healthcare Solutions create and release **Vision Local Codes**, based on the Read code format, to enable you to both record and report on new clinical terms within **Vision 3**.

 See [SNOMED CT In Vision FAQs for further information](#).

SNOMED CT Changes – Release v31.1.0

For full details of the latest SNOMED CT code release, please refer to <https://digital.nhs.uk/services/terminology-and-classifications/snomed-ct> and select **NHS Digital SNOMED CT Browser**.

 **Training Tip** - For further information about SNOMED CT, see <https://www.snomed.org/snomed-ct>.



New Vision Local Codes Released – v31.1.0

SNOMED CT Code	Description	Vision Local Code	Keyword(s)
Serotonin syndrome	371089000	SN5y200	SEROTONIN
COPD monitoring SMS invitation	1066281000000104	9Oi5.00	COPDSMS
COPD monitor 1st SMS invitation	1066821000000101	9Oi5100	COPDSMS
COPD monitor 2nd SMS invitation	1066841000000108	9Oi5200	COPDSMS
COPD monitor 3rd SMS invitation	1066851000000106	9Oi5300	COPDSMS
Post-COVID-19 syndrome	1325161000000102	AyuJC00	POSTCOVID
Signposting Your COVID Recover	1325021000000106	8HkjG00	SIGNPOST COVID
Refer Your COVID Recover rehab	1325041000000104	8Hkl.00	COVIDREHAB
Refer post-COVID assess clinic	1325031000000108	8HTE600	COVID REFER