

Setting up a Federated User in EMIS Web

To use Vision 360, you must complete the following three steps:

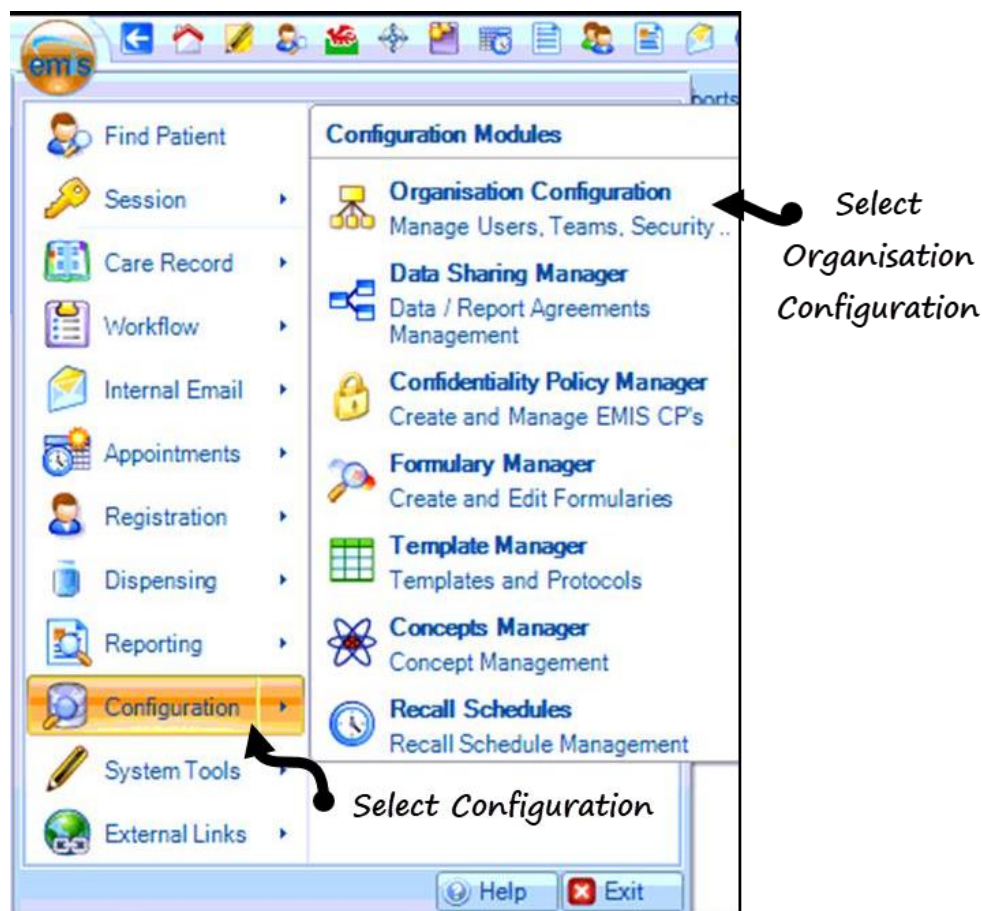
- Step 1 - Create a new user in EMIS Web
- Step 2 - Activate the Vision 360 application using EMAS Manager
- Step 3 - Add the Federated user to the Vision 360 application

Step 1 – Create a new user in EMIS Web

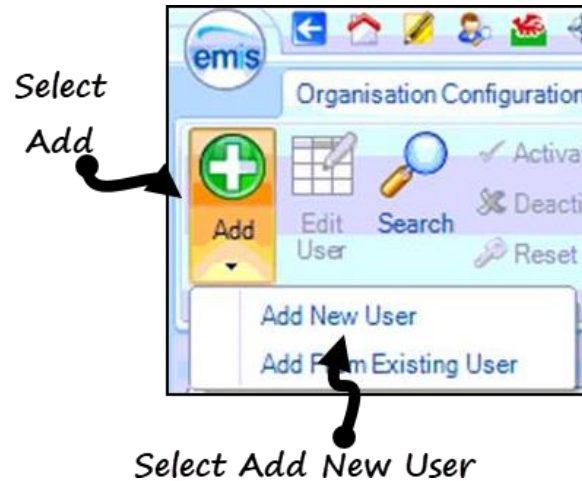
1. Login to EMIS Web.



2. From the EMIS home screen , select **Configuration** then select **Organisation Configuration**.




3. Select **Add** and choose **Add New User**.

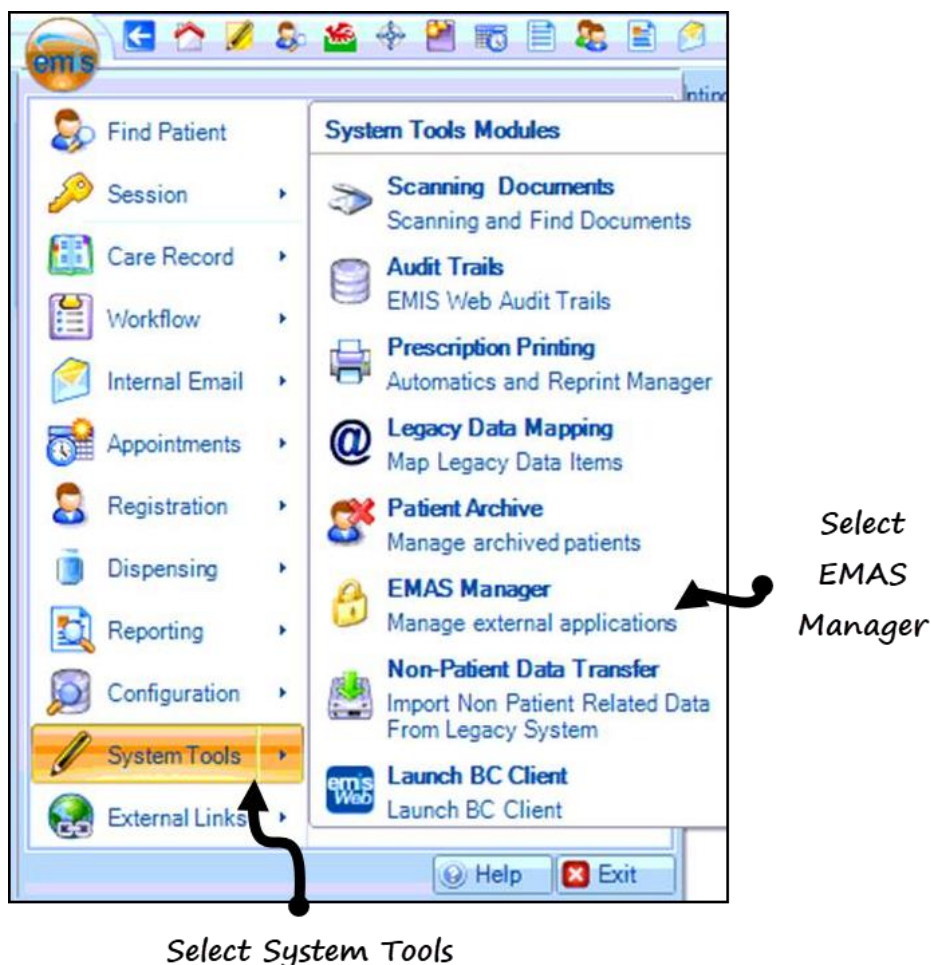


4. Create the user as per your install guide.

Step 2 - Activate the Vision 360 application using EMAS Manager



1. From the EMIS home screen , select **System Tools** and **EMAS Manager**.

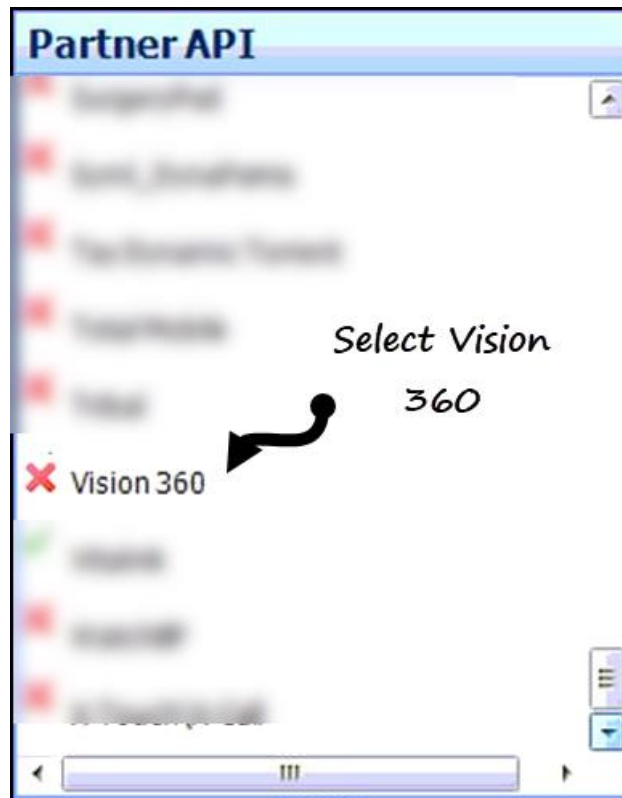


2. At the bottom of the Navigation pane, select **Partner API**.



Select Partner API


3. All the Partner API's are listed. Scroll down and select **Vision 360**.

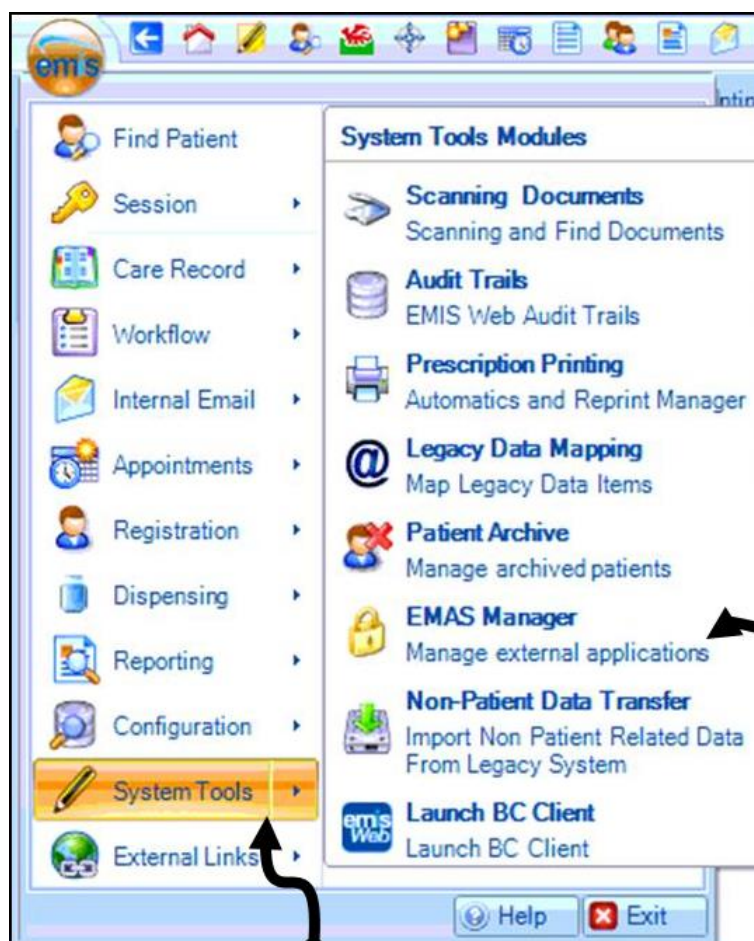


4. On the ribbon, select **Activate Application**. Vision 360 is activated, and a green tick displays beside it .

Step 3 – Adding the Federated User to the Vision 360 application



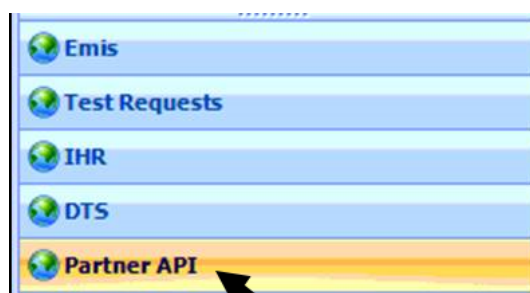
1. From the EMIS home screen , select **System Tools** and **EMAS Manager**.



Select
EMAS
Manager

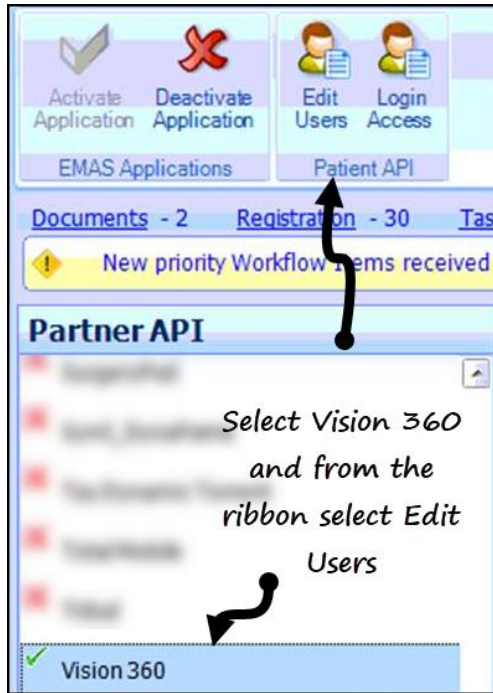
Select System Tools

2. At the bottom of the Navigation pane, select **Partner API**.

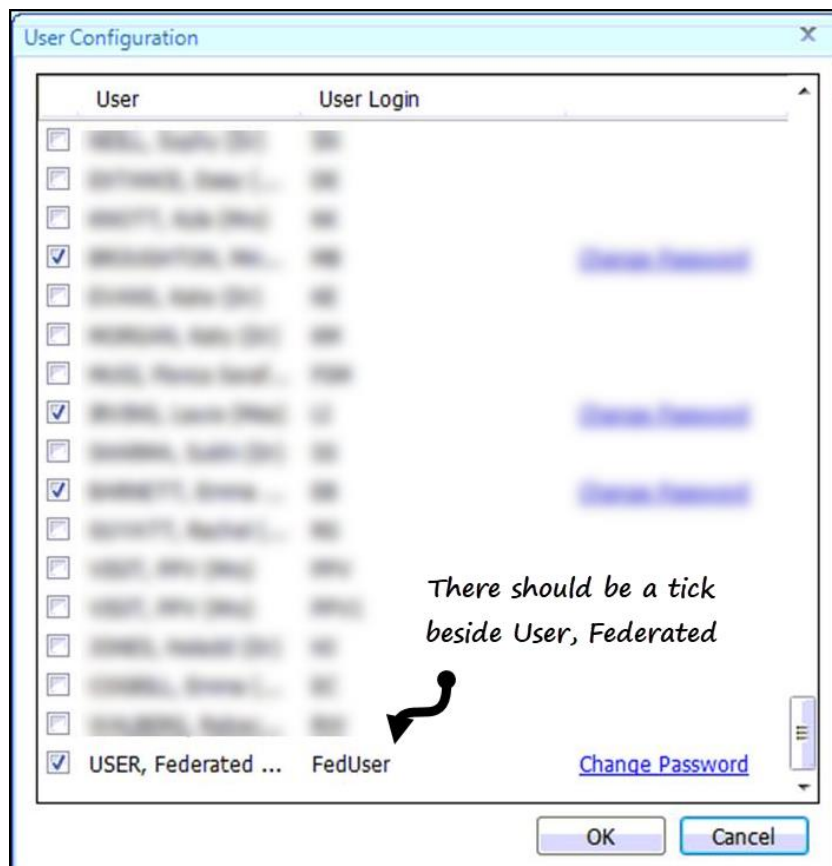


Select Partner API

3. All the Partner API's are listed. Scroll down and select **Vision 360**.



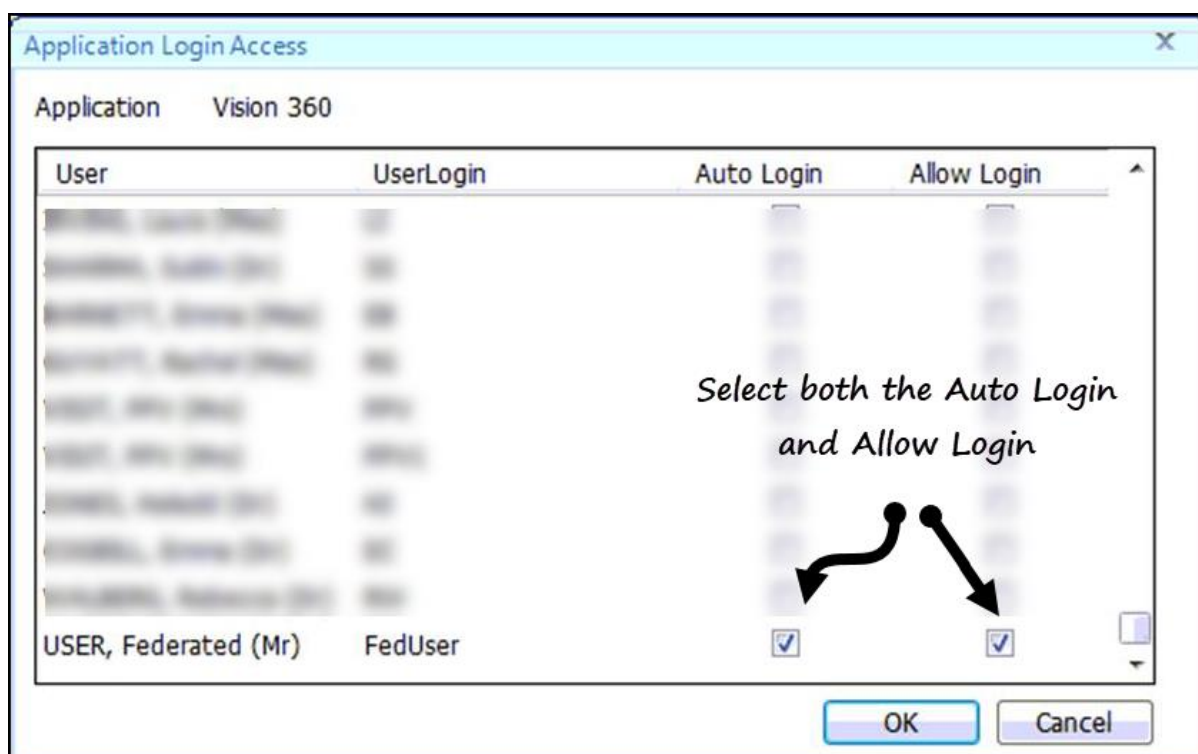
4. Select **Edit Users**
5. On the User Configuration screen, select **User, Federated** and make sure a tick is beside this user.



6. Select **OK**.

7. Now, from the ribbon select **Login Access**.

8. From the Application Login Access screen, select **Auto Login** and **Allow Login**.



9. Select **OK**.