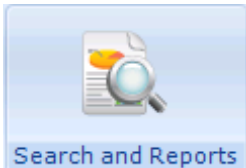


Patient Services - How Many Patients Have Registered?

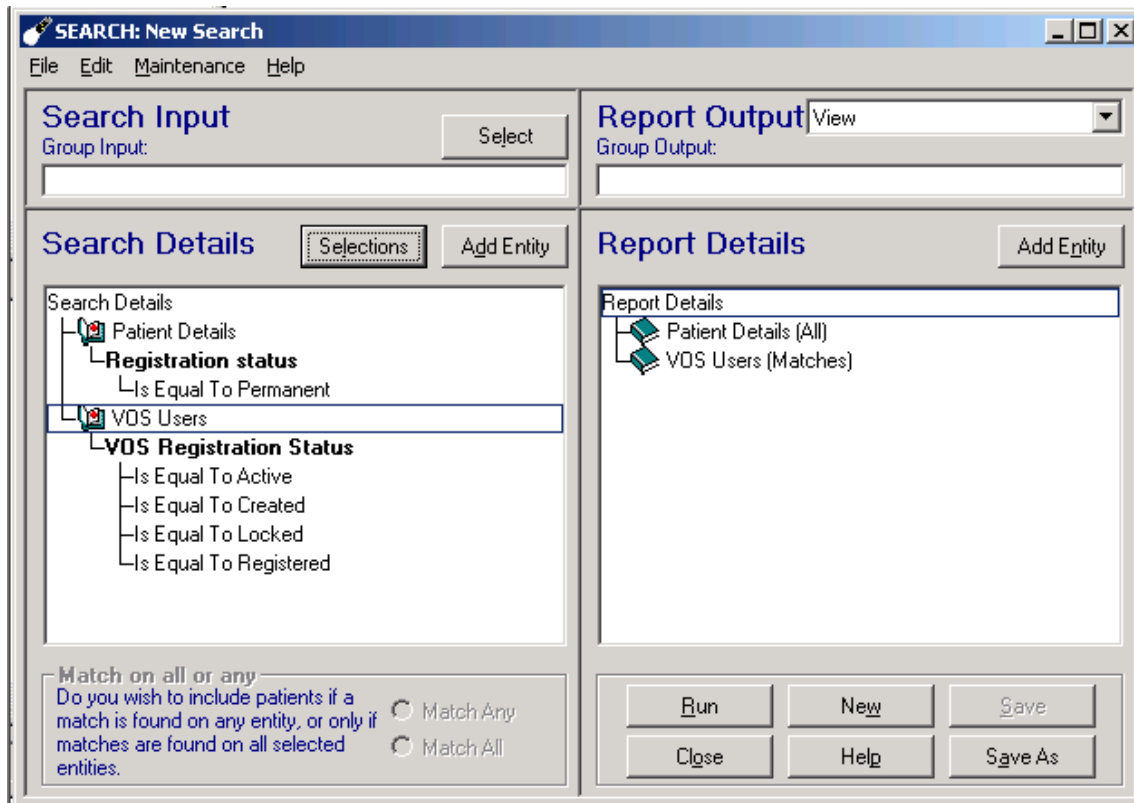
To find out how many of your patients have registered for Patient Services you can run the following search:

1. From the Vision front screen, select **Reporting - Search and Reports**



2. Click **New Ad-Hoc Search and Reporting**  and the **Search: New Search** screen is displayed.
3. Highlight **Patient Details** on the left and click on **Selections**.
4. Select **Registration Status** from the list on the left and select **Permanent** from the right.
5. Click **OK**.
6. Now, click **Add Entity** above the **Report Details** pane to open the **Select from Group** screen.
7. Open the **Miscellaneous Searchable Entities** folder and select **VOS Users**.
8. Click **OK**.
9. Highlight **VOS Users** in **Search Details** and click **Selections**.
10. The **Criteria Select** screen is displayed, double click on **VOS Registration Status** and then click **Active, Created, Locked and Registered**.

11. Click **OK**.



12. Click **Run** to display the search results.