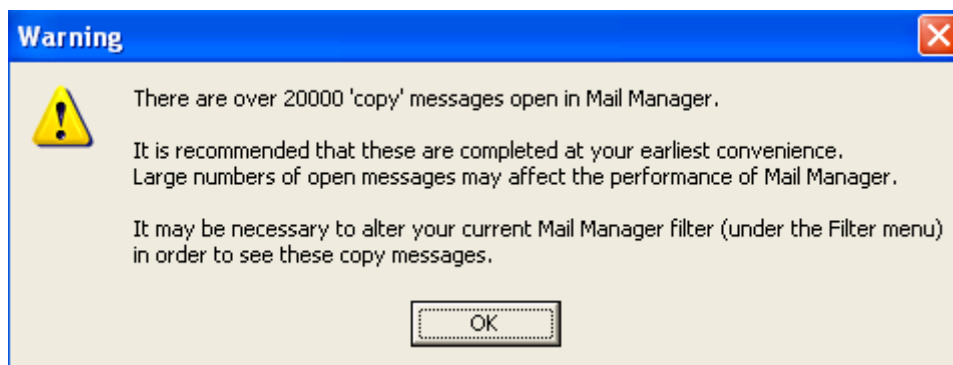


SIS10045 – Mail Manager Outstanding Messages Warning

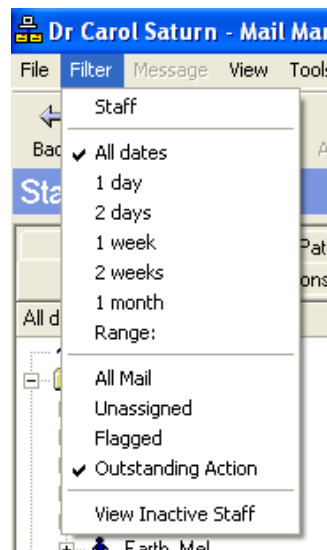
As part of SIS10045 and further to DLM 310, in Mail Manager, we have now increased the amount of outstanding messages permitted before the below warning message appears from 1,000 to **20,000**.

If you do have more than 20,000 outstanding copy messages, the following warning appears on accessing Mail Manager:



20,000 Copy Message Warning

Please follow the advice in the warning message and complete any relevant outstanding actions. You may need to change your date filter (ie to **All Dates – Outstanding Action**) to display outstanding messages:



Mail Manager Date Filter